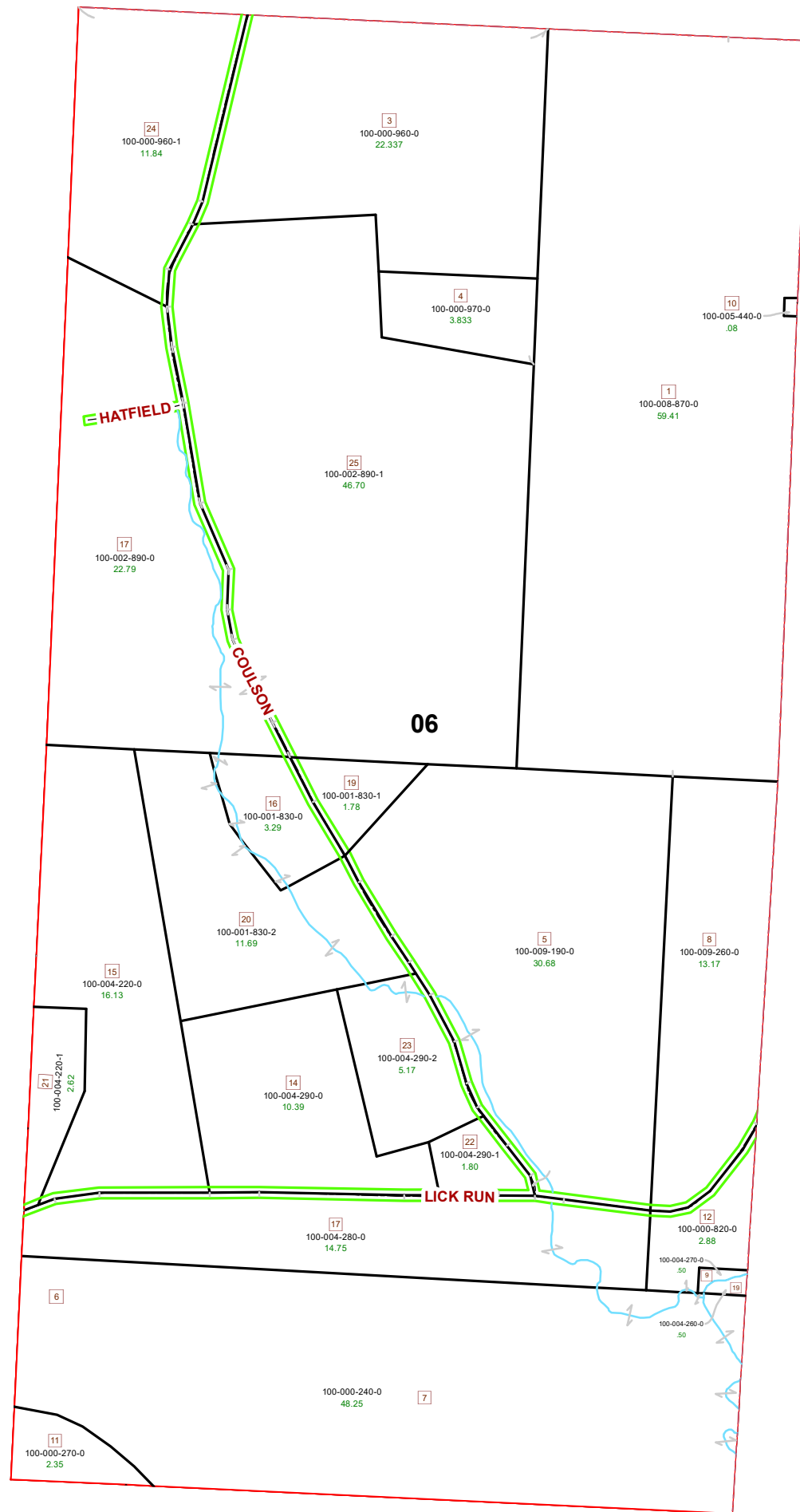
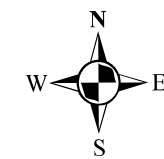


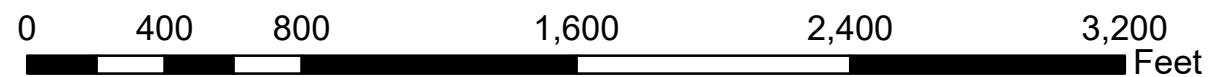
MARION TOWNSHIP SECTION 6 R12 TWP 8 MORGAN COUNTY, OH



PIN	Owner	VOL	PAGE	LegalDescr	Acres
100-004-290-1	ARMSTRONG GARY W	OR180	105	R12 T08 S06 SD 22	1.805
100-000-270-0	BARKELOO ALVIN DAVID JR ETAL	OR223	2066	R12 T08 S06 SD 11	2.35
100-000-240-0	BARKELOO ALVIN DAVID JR ETAL	OR223	2066	R12 T08 S06 SD 6-7	48.25
100-004-220-1	BOGGS KEVIN & GAYLE	OR221	1042	R12 T08 S06 SD 21	2.627
100-004-290-2	CAIN JASON	OR122	109	R12 T08 S06 SD 23	5.173
100-004-260-0	CAIN RONALD STEWART	OR209	2063	R12 T08 S06 SD 19	0.5
100-000-820-0	CAIN RONALD STEWART	D.V 198	98	R12 T08 S06 SD 12	2.88
100-004-270-0	CAIN RONALD STEWART	OR209	2063	R12 T08 S06 SD 9	0.5
100-009-190-0	CALDARULO JOHN	OR204	394	R12 T08 S06 SD 5	30.687
100-001-830-1	CALDARULO JOHN	OR232	3289	R12 T08 S06 SD 19	1.788
100-000-970-0	CHAPIN KEYSTONE PRESERVATION TRUST	OR232	1323	R12 T08 S06 SD 4	3.833
100-000-960-0	CHAPIN KEYSTONE PRESERVATION TRUST	OR232	1323	R12 T08 S06 SD 3	22.337
100-002-890-1	DILLE CURTIS R JR & JENNIFER B	OR216	543	R12 T08 S06 SD 25	46.7
100-005-440-0	ERLENWEIN MAGER F II & PAMELA D	OR192	527	R12 T08 S06 SD 10	0.08
100-001-830-2	HARBER CHARLES L	D.V 206	782	R12 T08 S06 SD 51	11.694
100-009-260-0	HENSLEY BRUCE E	OR175	372	R12 T08 S06 SD 8	13.174
100-002-890-0	HERSHBERGER WILLIAM J & EMMA J LC-JO	OR68	578	R12 T08 S06 SD 17	22.79
100-004-220-0	JUNN ROY L & PEGGY ANN	D.V 200	502	R12 T08 S06 SD 15	16.133
100-004-280-0	KINCAID JAMES B & JANET R	D.V 144	103	R12 T08 S06 SD 17	14.75
100-004-290-0	KINCAID JAMES B & JANET R	D.V 144	103	R12 T08 S06 SD14	10.392
100-001-830-0	MORGAN ROGER L SR & EVELYN F	D.V 207	102	R12 T08 S06 SD 16	3.298
100-008-870-0	REESE GARY C & MARGARET M	OR214	2903	R12 T08 S06 SD 1 S	59.413
100-000-960-1	REICHENBACH JOHN H	OR106	370	R12 T08 S06 SD 24	11.84



Boundaries	
----- Hidden	--- ROW
--- Hydro	--- Section
--- Roads	--- Lot
--- County	--- Township
--- Parcel	--- Parcels



Disclaimer: The information that these maps contains is for reference purposes only. Please bring any errors to the attention of the Engineer's Office staff.

Thank you